

## **Diagnosing LoTW**

Logbook of The World accepts digitally signed log files called TQ8 files.

The TQ8 files are created using TQSL software. The TQSL software uses digital Call Sign Certificates to sign the log file. The TQSL software also manages geographic information such as ITU & CQ zones, grid locators, US State, Canadian provinces, etc in Station Locations that you create. You can have as many Station Locations as you need to properly manage your operations. This is especially good for people who activate grids or counties or other entities within a DXCC entity

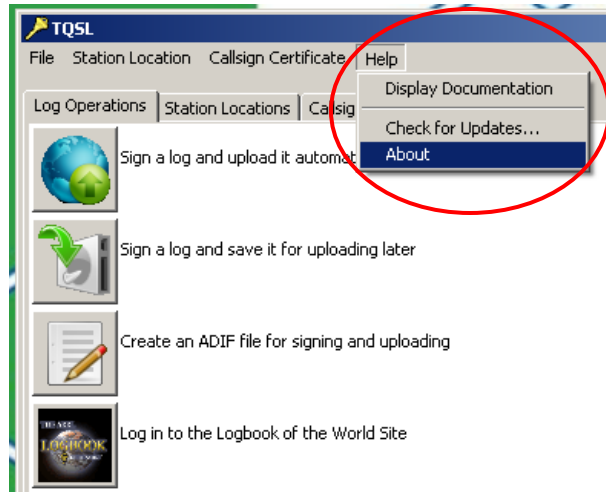
A TQ8 file contains three primary pieces of information.

- A digital signature with your Call Sign and DXCC entity.
  - From your Call Sign Certificate
- The QSO information - Station worked, date & time, band & mode.
  - From your ADIF or Cabrillo log file
- The geographic information from where you operated. (Grid, ITU & CQ zones, US state, county, etc.)
  - From your Station Location in TQSL

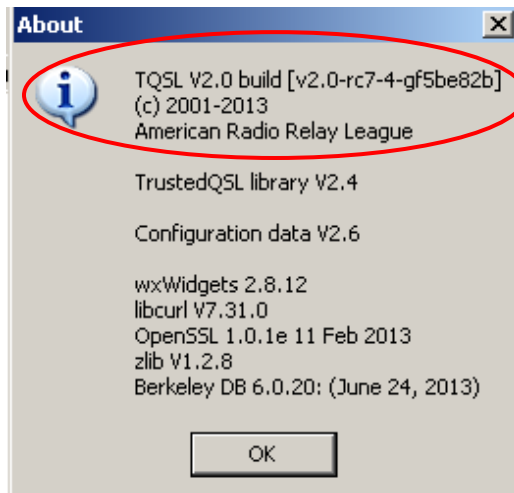
In Diagnosing LoTW we will verify your Call Sign Certificate and your Station Location in the TQSL software.

# TQSL 2.0

Before proceeding, make sure that you are using TQSL 2.0 or higher.



Open TQSL and select **Help** then select **About**.



The properties will be displayed with the TQSL version on the first line.

If you do not have TQSL 2.0 or higher download the software at

[www.arrl.org/instructions](http://www.arrl.org/instructions)

## **Verify Your Call Sign Certificate**

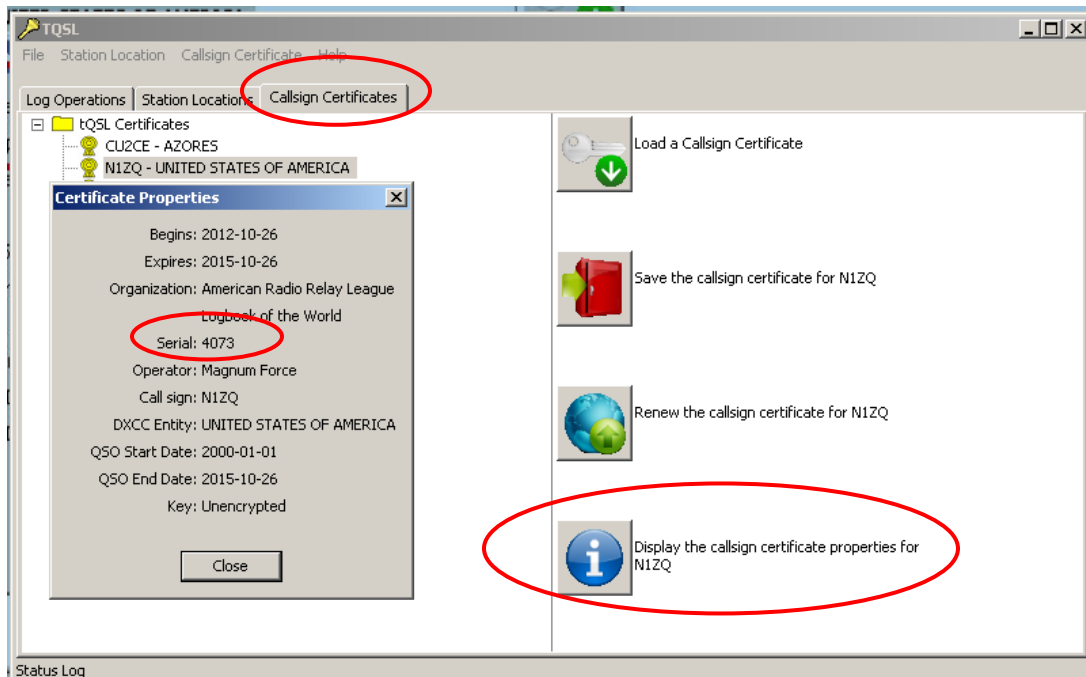
TQSL uses digital Call Sign Certificates to sign your log files. The first Diagnostic step will **verify that there is a valid Call Sign Certificate in your computer and if this is true does it match the Call Sign Certificate in the LoTW system.**

*The Call Sign Certificate in your computer must match the Call Sign Certificate in the LoTW system. This is how the system verifies the signature of files sent by you to LoTW.*

If the Call Sign Certificate serial numbers in your LoTW user account and your TQSL software do not match or you do not have a Call Sign Certificate in your TQSL software you will have to request a new Call Sign Call Sign Certificate.

Let's check your Call Sign Certificates.

1. Open the TQSL program by double clicking the desktop icon.



2. In the TQSL program select the Call Sign Call Sign Certificates tab.
3. Is there a Call Sign Certificate displayed with your call sign and DXCC entity?
  - a. If yes, continue to step 4.
  - b. If no then you will have to request a Call Sign certificate. See [www.arrl.org/instructions](http://www.arrl.org/instructions) Instruction #2.
4. Is there a gold ribbon to the left of the call sign?
  - a. If yes continue to step 5.
  - b. If a red slashed circle or broken ribbon icon is present then you will have to delete the line (right click – DELETE) then request a Call Sign certificate. See [www.arrl.org/instructions](http://www.arrl.org/instructions) Instruction #2.

5. Click on the Call Sign Certificate so that it is highlighted.
6. On the right side of the TQSL window click the icon to display the Call Sign Call Sign Certificate properties.
7. The serial number of your Call Sign Call Sign Certificate will be displayed in the properties box.
8. Copy this serial number on a piece of paper so we can compare this serial number of the Call Sign Certificate in your computer to the information residing in the LoTW system. (Next step)

# Your LoTW Account

Get started today!' and '[ARRL website](#)'. At the bottom, it says 'Copyright 2013 American Radio Relay League, Inc. All Rights Reserved'."/>

Log on to Logbook of the World

Note: You must have been issued a certificate before you can log on to the LoTW site.

Username:

Password:  Note: This is **not** the password sent to US amateurs via postcard!

Log On

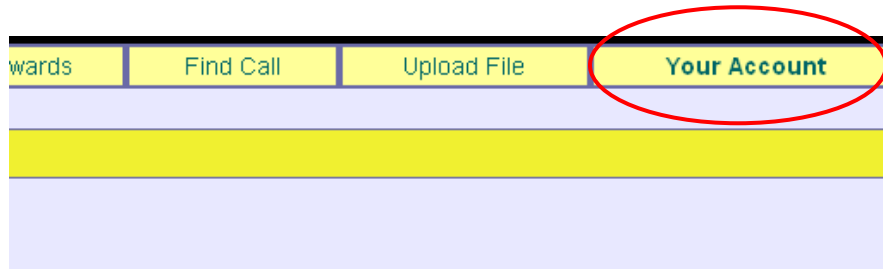
Your browser must support cookies in order to log in.

Not a member of Logbook of the World? [Get started today!](#)

[ARRL website](#)

Copyright 2013 American Radio Relay League, Inc.  
All Rights Reserved

1. Log into your Logbook of The World user account.



2. Select the [Your Accounts] tab.

**Logbook Web Account Menu**

- Your Activity
- Your Certificates**
- Change Password
- Account Settings
- Your Messages
- Payment Credits
- Payment Method

**Your Logbook Account**

Use the menu on the left to view or change your Logbook account information.

**Your Certificates**

1 Certificates Found

[Download your certificates](#) (includes TQSL Configuration)

[Download current TQSL Configuration file](#) (Version 2.6; last updated 2013-10-14 1...)

**Certificate 4073**

**Valid:** 2012-10-26 00:00:00 - 2015-10-26 23:59:59

**Call sign:** N1ZQ

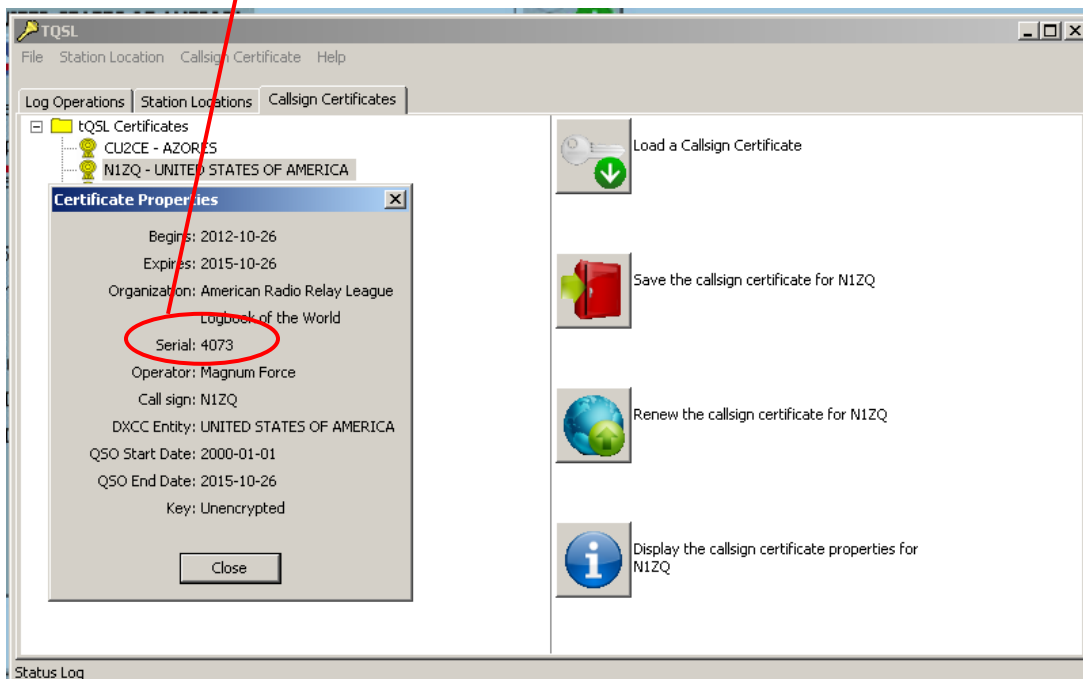
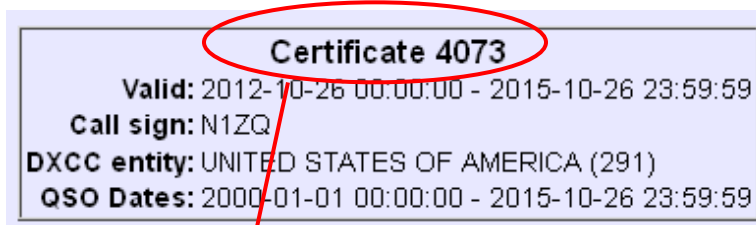
**DXCC entity:** UNITED STATES OF AMERICA (291)

**QSO Dates:** 2000-01-01 00:00:00 - 2015-10-26 23:59:59

3. Select the [Your Call Sign Certificates] tab on the left side of the page.

This page displays the Call Sign Certificate properties of the Call Sign Certificates that reside in the LoTW system. *A Call Sign Certificate in the LoTW system does not mean that the Call Sign Certificate is in your computer.*

Compare the serial numbers displayed in your TQSL software to that displayed in your LoTW user account. They must match.



If the Call Sign Certificate serial numbers in your LoTW user account and your TQSL software do not match or you do not have a Call Sign Certificate in your TQSL software you will have to request a new Call Sign Call Sign Certificate.

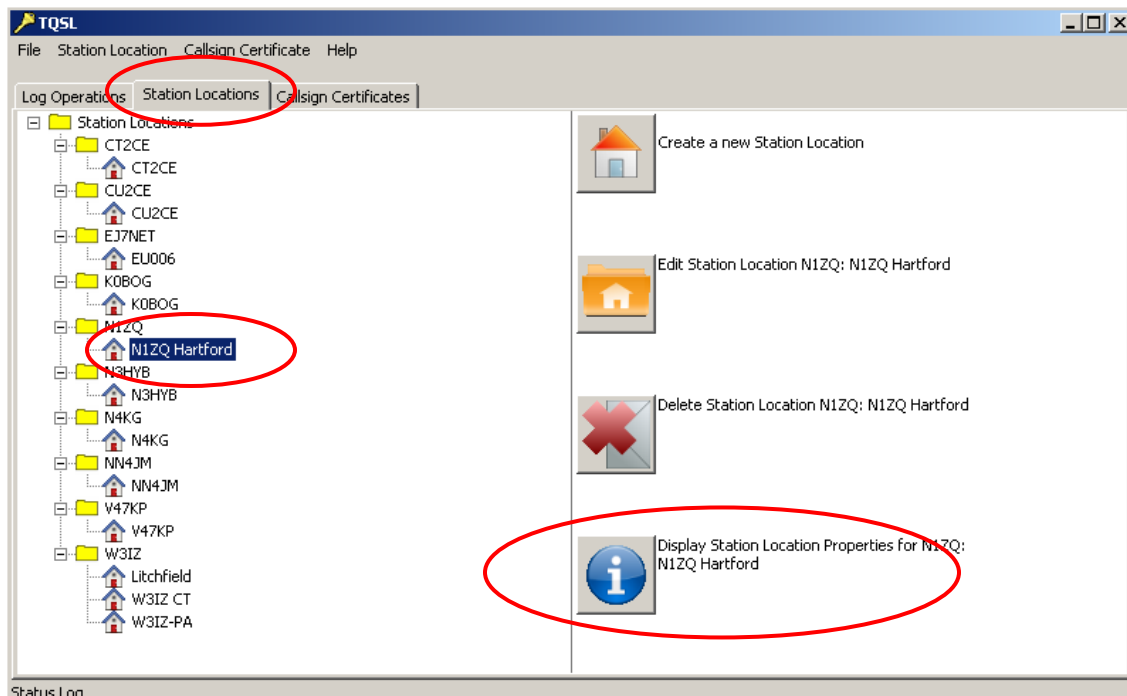
## **Verify Your Station Location**

Your ***Station Location*** in TQSL contains the geographic information of your operation. *Station Locations* are associated with *Call Sign Certificates*. You can have as many Station Location as required to accommodate your operating. If you are an active VHF operator who operates from different grid locations you will make a location for each operation.

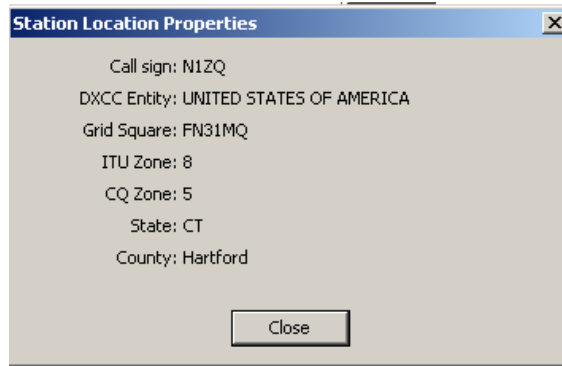


Let's check your Call Sign Certificates.

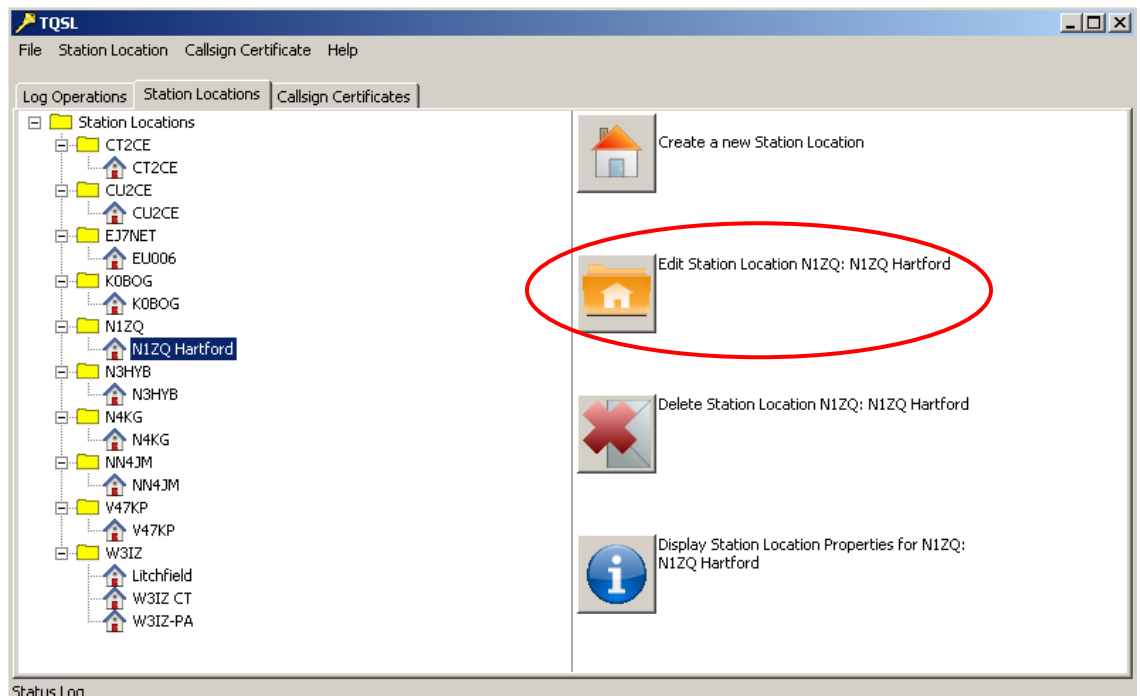
1. Open the TQSL program by double clicking the desktop icon.



2. In the TQSL program select the Station Locations tab.
3. The tree will display folders for call sign which you have certificates. Expanded folders will display locations for which you have made for a particular call sign. Do you have a location for the call sign being diagnosed?
  - a. If yes, continue to step 4.
  - b. If no, then you will have to request a make a Station Location. See [www.arrl.org/instructions](http://www.arrl.org/instructions) Instruction #5.
4. Highlight the location by clicking on the name one time.
5. Click the icon on the right side of TQSL to display the Station Location properties.



6. Is the information correct?
  - a. If yes continue to step 5.



- b. If no, then close the properties box and click the Edit Station Location icon to make changes in this location.

After this step your TQSL software is configured properly and should sign and upload logs using TQSL. If you are using a logging program shortcut to execute TQSL to sign and upload log be sure that your logging software is configured correctly. See your logging program support for help with this.